
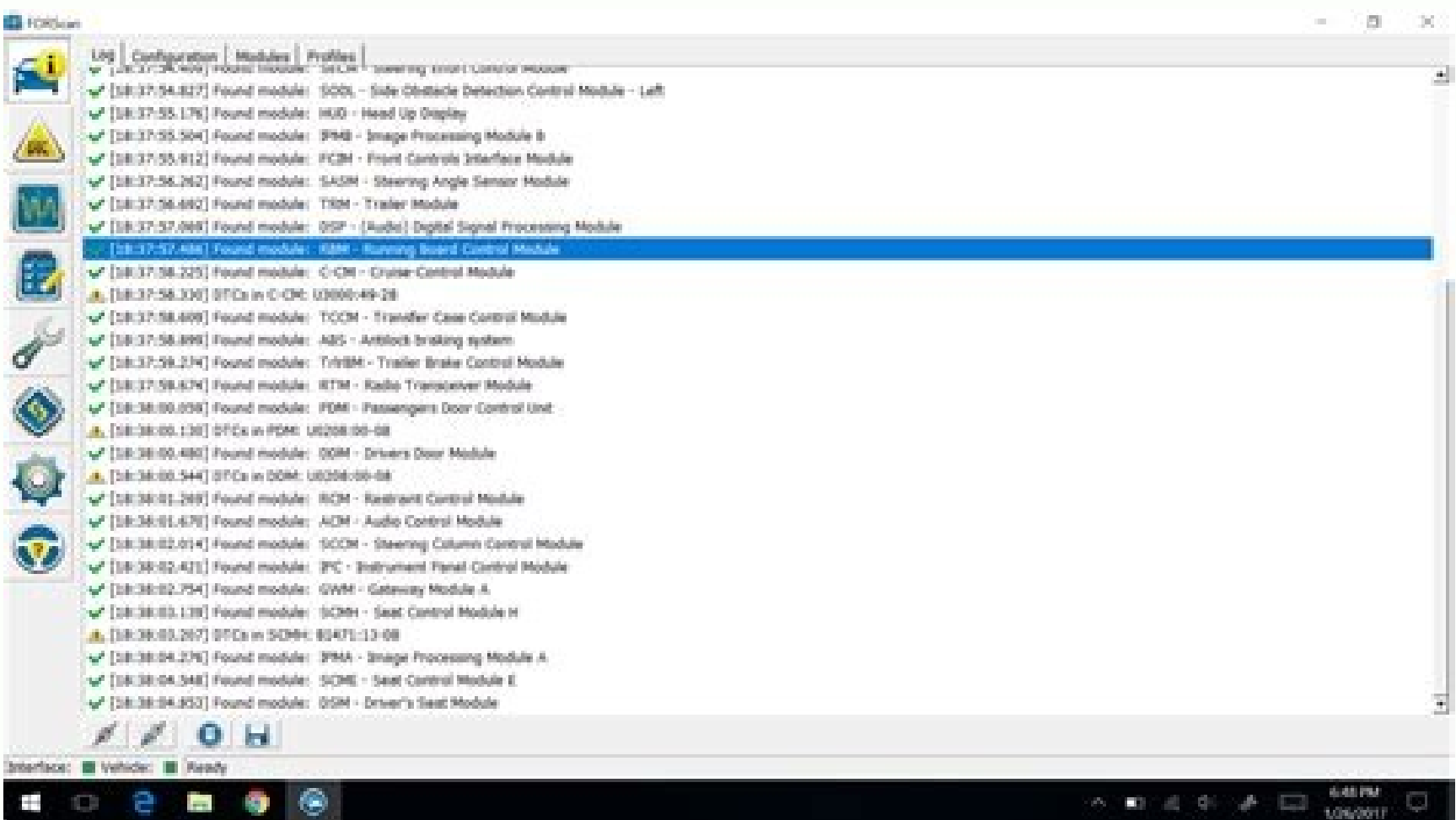
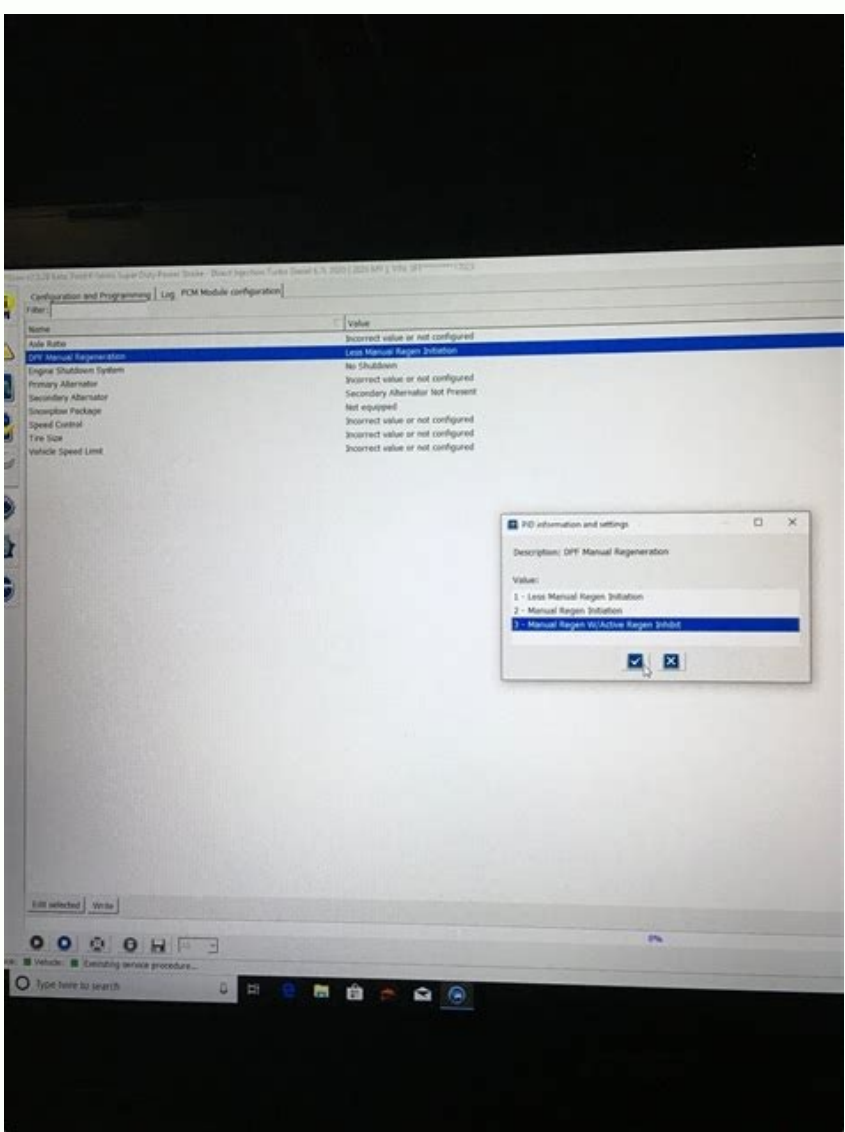
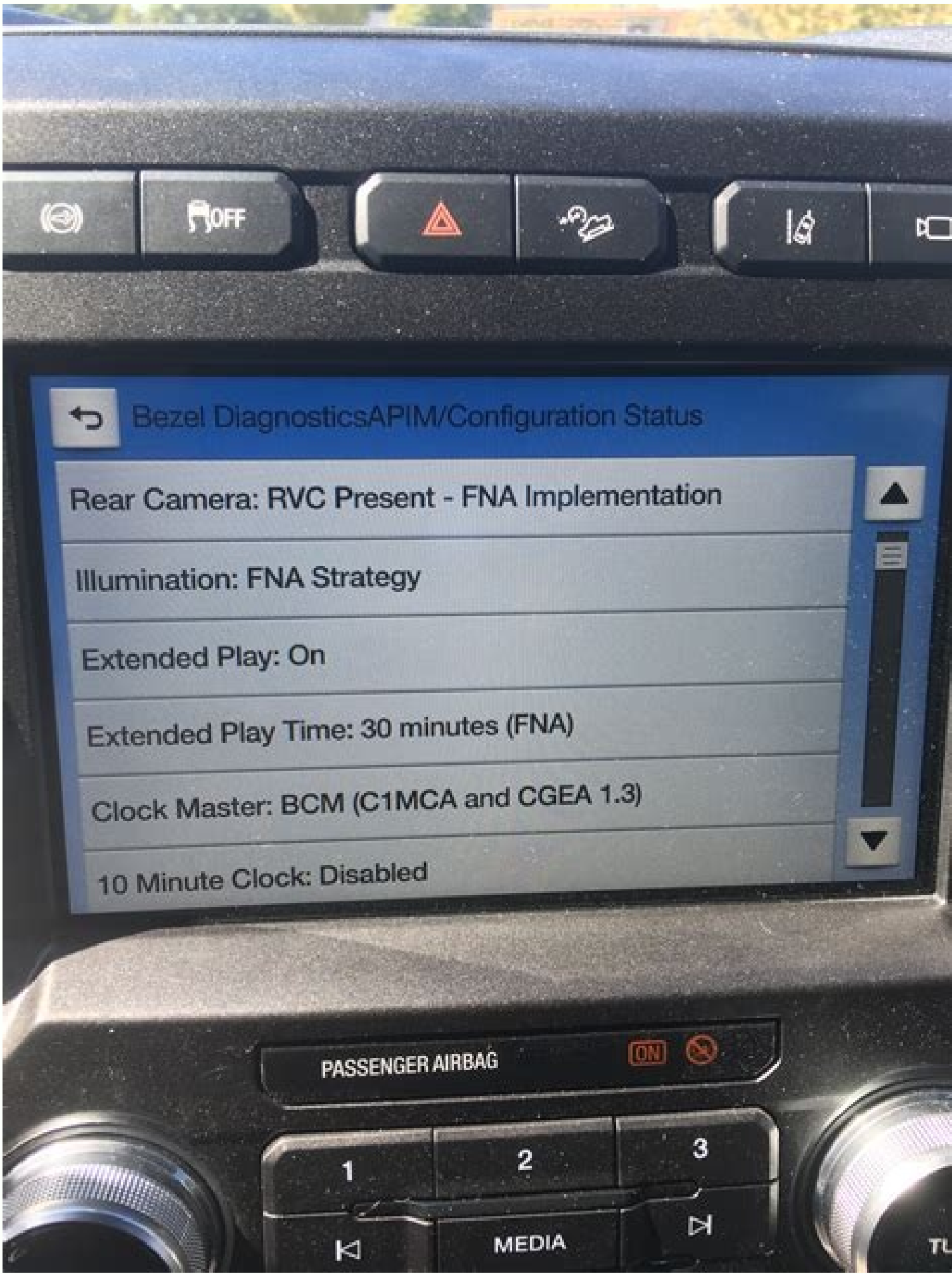
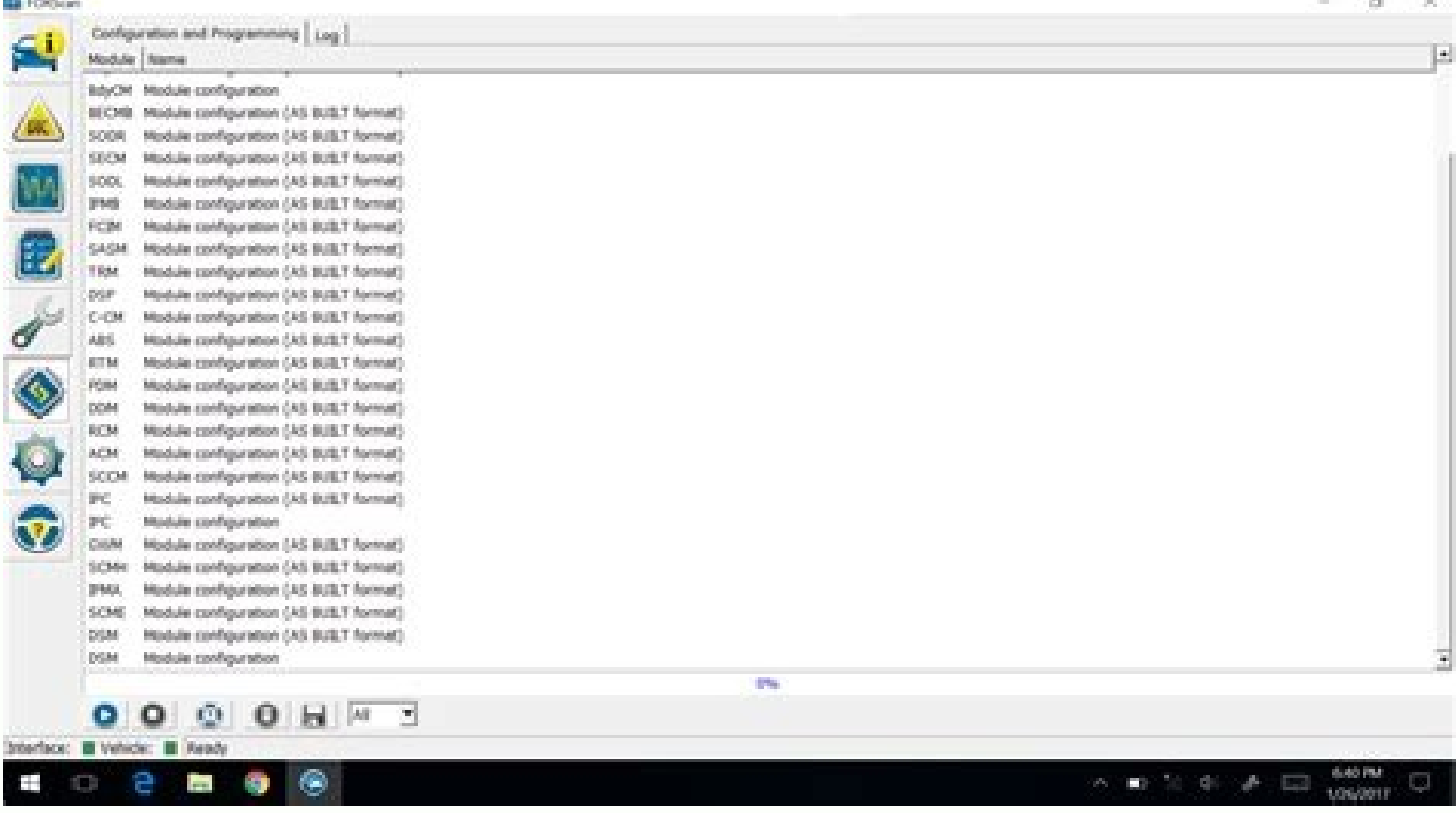


I'm not robot  reCAPTCHA

**Continue**







Ed I just did this, it turned the 3 dings off when the ignition is on. Seems overkill, but I am not in a hurry. It's not scary at all for the things in the "non-as built" sections. Went in and changed the As Built 720-01-02 and eliminated that with the change to xxxx x2xx. Reactions: 2020larry and IceSoldier88 Joined Feb 26, 2020 Messages 23 Reaction Points 41 Location Baltimore Current Ride Tremor And for those curious as Warpath was saying - here is a screenshot of the NON-AS-BUILT section. Went in and changed the As Built 720-01-02 and eliminated that with the change to xxxx x2xx. Joined Dec 31, 2019 Messages 15 Reaction Points 42 Location Oregon Military Coast Guard Current Ride WRX So here is what I've been able to do so far with Forscan using 2017+ Super Duty spreadsheet: AS Built Modules IPC 1) 720-07-01 = Display temps above gauges 2) 720-01-01 = Disable all seat belt chimes 3) 720-01-02 = Disable triple ding at startup 4) 720-07-02 = Add DPF Filter % to screen SCCM 1) 724-01-01 = Turn Signal flash count to 5 NOT AS Built Modules IPC 1) Disable door ajar chime BdyCM 1) Fog light usage for DRL 2) Using Fog lights with High Beams (Bambi Mode) 3) TPMS placard lowered to 65psi rear I know its not much yet, but I only do one change at a time to make sure nothing else gets out of whack. The newest version of FORScan makes it easier than entering all of these individual codes however you can see here what options exist. OBDLink MX Bluetooth The final step is to plug in the adapter into the truck's OBDII port and select the OBDII adapter in the FORScan software under Settings (the gear icon) and the Connection tab. Ed Last edited: Feb 22, 2020 Reactions: JakePs, RickLB, Lite and 1 other person Joined Sep 14, 2019 Messages 497 Reaction Points 1,107 Location Dallas, TX Current Ride 2020 F350 6.7l King Ranch Tremor Current Ride #2 2004 and 2008 Jeep Wrangler Unlimited I turned on the field to enable "Tilt Mirrors in Reverse" in the non-as-built area, but I am unable to figure out how to get them to tilt. \*\* Update \*\* 2020-2021 Super Duty FORScan Spreadsheet \*\* Popular Changes Last edited by a moderator: Oct 28, 2020 Reactions: drivingforward and Criosk Joined Sep 14, 2019 Messages 497 Reaction Points 1,107 Location Dallas, TX Current Ride 2020 F350 6.7l King Ranch Tremor Current Ride #2 2004 and 2008 Jeep Wrangler Unlimited My OBDLink EX FORScan OBD Adapter will be here tomorrow night. The following is proven to work in all cases. Also of note: I noticed in the BCM non as built they have a tire circumference for tire size. Ed Last edited: Feb 17, 2020 Reactions: JakePs, Lite and ShiverMeTimbers Joined Feb 7, 2020 Messages 152 Reaction Points 348 Location NEK, Vermont Current Ride 2020 ford super duty f350 lariat tremor/ sport I'm interested to try some of this. What do I need and how hard is it? Use FORScan to load that module and adjust as desired. Copy the Hardware ID (found in FORScan software under the steering wheel with a question mark icon). Use at own risk!! Check back for more updates on the process. Also, the blog comments below might be helpful. Must be run on a Microsoft Windows PC or tablet that has Bluetooth connectivity. Download and install FORScan for Windows. Reactions: JakePs and 01R12GO Reactions: Warpath Joined Jan 22, 2020 Messages 4,617 Reaction Points 11,826 Location Wisconsin Current Ride 6.7 F350 Tremor "Velocity" Blue Lariat Sport Current Ride #2 7.3 F350 Iconic silver THE SILVER FOX I'm in, there is just too many good options to personalize your truck. Thanks! All of that is in the non asbuilt files. I will see what it all looks like when the adapter gets here and update. The things you may want to change in the "As-Built" areas are a bit more scary because you are changing random numbers, but I am sure as FORScan maps out the 2020's, it will be as easy. Wait until complete and you're ready to go. Also, I am really happy with the Tremor so far. It's a delicate operation and has the potential for unwanted results, so be careful. Heres a link explaining what it is: Heres a link to the spreadsheet for Superduty's : 0 (some of these work and some don't for 2020's) \*\*\*This was written by another user (Epic cowlick) on another forum. I document everything on paper as well as backing up each module before I change it. The FTE FORScan spreadsheet has over 90 codes shown for 2017. There have been a few reports of different parameters between the 2019 to 2020 FORScan forum? They will be in the non-asbuilt file easily changeable in a drop down box. \*Disclaimer: KYD did not generate this document nor did we test every mod listed. No kidding. User Control Panel? Register? 2. I have the new OBDLink EX on order and set to arrive next week. It is my understanding that many of the 2017+ codes do not work for the 2020 models. So far it has been great! I have my fog lights set as DRL. Some of the BCM mods will not be in the "as built" files. I was looking at the 2017+ Superduty list however and it shows that this is for the seat belts and the ignition chime and shows this: xx0x xxxx xxxx. Anyone with experience with this? Plenty of videos on YOUTUBE too. I will only change one at a time. I take no credit for his hard work: Three steps for downloading, installing and activating the FORScan software: 1. Joined Sep 14, 2019 Messages 497 Reaction Points 1,107 Location Dallas, TX Current Ride 2020 F350 6.7l King Ranch Tremor Current Ride #2 2004 and 2008 Jeep Wrangler Unlimited So here is what I've been able to do so far with Forscan using 2017+ Super Duty spreadsheet: AS Built Modules IPC 1) 720-07-01 = Display temps above gauges 2) 720-01-01 = Disable all seat belt chimes 3) 720-01-02 = Disable triple ding at startup 4) 720-07-02 = Add DPF Filter % to screen SCCM 1) 724-01-01 = Turn Signal flash count to 5 NOT AS Built Modules IPC 1) Disable door ajar chime BdyCM 1) Fog light usage for DRL 2) Using Fog lights with High Beams (Bambi Mode) 3) TPMS placard lowered to 65psi rear I was unable to modify the As Built stuff - not much lined up so I passed on it for now. TY. When FORScan connects, it shows you what you can change, and it is super easy. I want to start with turning on Bambi mode, change my rear TPMS pressure to 65, add secure idle and disable double horn honk on walk away. Register on the Forum: FORScan forum? There are a number of AS Built features for our 2020 that don't line up with the spreadsheet. I have tried a number of things I found on the FTE site to program them, but it doesn't seem to work. I did download the As Built file for my vin from Ford, and it looks different than what I see for the 17-19's Ed Reactions: JakePs, DIY10-85RAY, LariatSportTremor and 1 other person Joined Jan 30, 2020 Messages 597 Reaction Points 1,944 Location St. Louis Military U.S. Army Current Ride 2020 F250 Tremor Current Ride #2 2020 Shelby GT500 Yes, I have modified many small things with FORScan. Thanks! Joined Jan 30, 2020 Messages 597 Reaction Points 1,944 Location St. Louis Military U.S. Army Current Ride 2020 F250 Tremor Current Ride #2 2020 Shelby GT500 I just did this, it turned the 3 dings off when the ignition is on. I want to do the seat belt chimes, and the double beep when you get of truck but if the #'s don't line up it makes me nervous. Tweaking the parameters to override some of the NANNY functions make for a much better Owner experience. Search "OBDLink MX Bluetooth" on Amazon. I did turn off honk twice on walk away with key, turned on police mode, Bambi mode, set rear TPMS to 60psi, changed my Sync 3 start screen to Ford Performance, and added average speed display. Is it a laptop and cord with downloaded charts?? Not all work on all models. Admittedly, I am a GM / HP Tuners guy and FORScan is new to me, but what I could do was easy to find/modify. Login At this point you are registered on the forum and your copy of the FORScan software is activated. Reactions: Trent-20Tremor7 and Hammrod Joined Sep 14, 2019 Messages 497 Reaction Points 1,107 Location Dallas, TX Current Ride 2020 F350 6.7l King Ranch Tremor Current Ride #2 2004 and 2008 Jeep Wrangler Unlimited Was running errands today and got sick and tired of the triple ding on startup. I even got a thumbs up from a Ram guy the other day! hahaha Last edited: Feb 16, 2020 Reactions: MJL, JVT73, STROKINTREMOR and 9 others Joined Jan 30, 2020 Messages 597 Reaction Points 1,944 Location St. Louis Military U.S. Army Current Ride 2020 F250 Tremor Current Ride #2 2020 Shelby GT500 That's about all I've done. Ed Joined Feb 26, 2020 Messages 23 Reaction Points 41 Location Baltimore Current Ride Tremor Was running errands today and got sick and tired of the triple ding on startup. I am a Mac guy so I will have to pick up a cheap lap top at Costco/Walmart next time. I might have to do a demo of how easy it is. Download FORScan 3. I only have a couple of things I want to do at first, but am also hearing there are a number of differences from the 17-19 BCM and the 2020's. FORScan website OBDLink Wireless Scanner Diesel Savings Fuel Card KYD's Amazon Page - check out the "For Your Truck Category" FORScan Codes for 2017+ Super Duty KYD's Truck Upgrade Video FORScan Updates Below is a list of the updates we made to my 2019 F250 Super Duty. You'll also need version 2.3.3.0 for the re-learn process. Except I added the police idle. Find what you want and it tells you in which module it is located. I am technology challenged in a very big way! like get my grandkids to do stuff for me). Joined Oct 2, 2019 Messages 226 Reaction Points 441 Location Idaho Military U.S. Army Current Ride 2020 6.7 Lariat Sport Tremor Current Ride #2 2013 Rubicon Unlimited Is there anyone here who is also a FTE member that would be willing to start a 2020+ FORScan spreadsheet? Turned off the chimes Updated the fuel tank size to 60 gal Display the DEF filter status Turned on the transmission temperature gauge Adjusted TPMS low-pressure settings Turned on DEF manual regen Turned on Auto regen option Turned off double honk on leaving Turned on fog lights when high beams are on Turned on police idle factory Heated steering wheel icon Climate icon mode FORScan Process The Excel file linked above is the list that we used in this video. Whats police idle do? I think I would use it but not sure if I'm capable? Once selected, press the Vehicle Interface and Information icon (the auto with the exclamation point) button and FORScan will begin scanning all available modules. If you try to change the as built file for 37" tires your dash will light up like a Christmas tree. Is it a laptop and cord with downloaded charts?? It is in plain English and very easy to change. Check this blog post again for more updates and information. Connecting FORScan to the truck: The FORScan software connects to the truck's computer modules via a Bluetooth OBDII connector. As you can see its as simple as highlighting what you want to change - clicking the option you want - hitting the check - hitting the write button. The 2020's have 2 BCM's. I like builtit am nervous about doing things like this but to turn that thing off I might have to look into it further. I am very interested and have been looking at other boards for this also. Ed Reactions: JakePs, RickLB, Lite and 3 others Joined Dec 31, 2019 Messages 15 Reaction Points 42 Location Oregon Military Coast Guard Current Ride WRX Warpath gave you great info and links. Generate the Extended License (free) using the previously copied Hardware ID. Any help in this area will be appreciated by all. This can be run on an Apple computer if run in Bootcamp mode. Some are great some not so. Reactions: JakePs, mbs550, RickLB and 13 others Joined Sep 14, 2019 Messages 497 Reaction Points 1,107 Location Dallas, TX Current Ride 2020 F350 6.7l King Ranch Tremor Current Ride #2 2004 and 2008 Jeep Wrangler Unlimited Warpath gave great info! It's really easier than setting up your email on a mobile phone. There are many connectors available and some work properly and others don't. Where did you get your info from? Thanks Forscan! Can't wait to upgrade to LED, these halogen lights just do not compare. Reactions: JakePs, MJL, LariatSportTremor and 3 others Joined Jan 30, 2020 Messages 597 Reaction Points 1,944 Location St. Louis Military U.S. Army Current Ride 2020 F250 Tremor Current Ride #2 2020 Shelby GT500 I'm interested to try some of this. What do I need and how hard is it? I couldn't find the triple ding at start settings, and wasn't sure on Allow NAV input while driving. You will see other settings you can change in there as well. Reactions: JakePs Joined Feb 26, 2020 Messages 23 Reaction Points 41 Location Baltimore Current Ride Tremor That's about all I've done. Joined Dec 31, 2019 Messages 15 Reaction Points 42 Location Oregon Military Coast Guard Current Ride WRX Has anyone here tried to modify anything on their new 2020 with FORScan yet? Below the asbuilt files. Don't need to burn my halogen bulb headlights out. Joined Jan 16, 2020 Messages 455 Reaction Points 876 Location Texas Current Ride Oil Burning 2020 F-250 TREMOR Current Ride #2 2018 Wrangler JL gosh that double honk thing drives me nuts. It is good to be cautious when we start to reprogram things.